



Installation Steps for ARALOC Viewers



AS Knowledge Services Practice
June 2011

ARALOC Online Viewer

Does not require Installation

First time the viewer is launched, Java environment is downloaded to user machine from the URL site

When **connected** to TKL

- Internet Connection required
- Permission to view TKL content file (.araloc file)

Viewing - Steps when logged into TKL

- Navigate, Browse and Select the Content in the TKL Application
- Click on selected file, download and save onto the local machine
- Click on the 'Launch ARALOC Viewer' Button on the TKL Web interface or Desktop short cut
- Online Viewer pops up a File Navigation window
- Navigate to the folder on the local machine and click on the selected Content "Package"
- Viewer shows the content in a new window after authentication (ARALOC DRM user credentials)

- ARALOC offers Online viewer and Installable Viewer
- Both Viewers have the same viewing capabilities

When **NOT** connected to TKL

- Internet Connection required

Viewing Steps - not logged into TKL

- Click the shortcut to the viewer on the desktop
- Online Viewer pops up a File Navigation window
- Navigate to the folder where Downloaded Content "Package" is stored in user machine
- Double-Click on the selected content file
- ARALOC Online viewer will seek credentials
- On validation, the viewer will launch the file in a new window

Pre-Requisites for Online Viewer Download

- Reliable Internet Connection
- Adequate disk-space (Approximately 15MB)
- Installed JRE 1.6 environment on the machine

Please note that this is only a download and not an installation and hence does not require administrative rights (to install software) on the user machine.

Links to the online Viewer

Download Online Viewer:

Use the URL to start the Java Viewer download: <http://protected.araloc.com/viewer.jnlp>
(Used mostly in IE environments)

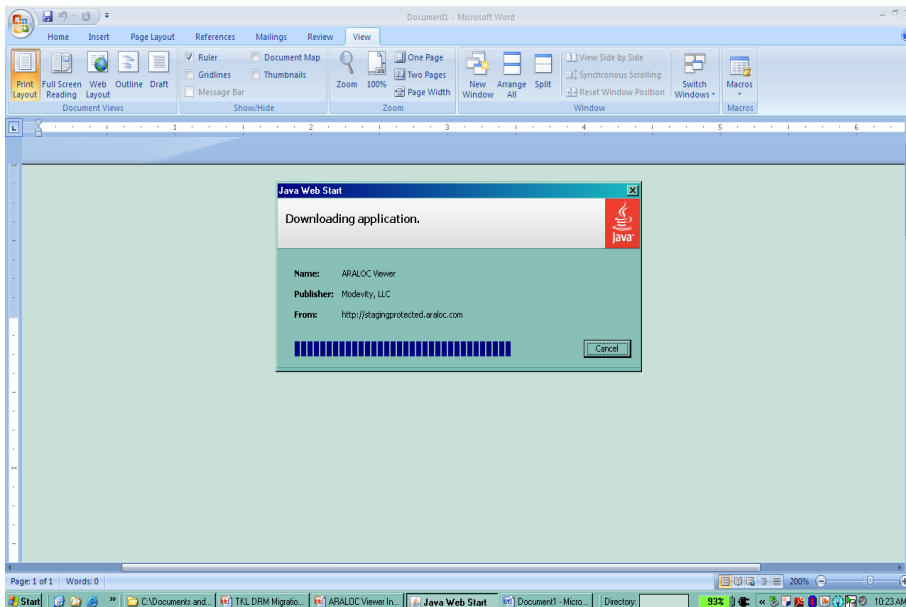
If there is an error message like “program doesn’t start”, it could be due to security issue.

Then Please use https link : <https://protected.araloc.com/viewer.jnlp>
(Used mostly in Firefox)

Launching for ARALOC Online Viewer

Step 1 : Click on the link for the Online ARALOC Viewer

First Time: Java Web Starts to download viewer.jnlp and starts the viewer navigation window



Subsequent Clicks: Java Web verifies and start the viewer navigation window



ARALOC Installed/offline Viewer

Requires installation

When **connected** to TKL

- Internet Connection required for the first time for content activation
- Permission to view TKL Content file (.araloc file)

Viewing - Steps when logged into TKL

- Navigate, Browse and Select the Content in the TKL Application and click file to open (on the download symbol)
- ARALOC Installed viewer will seek credentials
- On validation, the viewer will launch the file in a new window
- ARALOC Viewer shows the content in a new viewer window

- ARALOC offers Online viewer and Installable Viewer
- Both Viewers have the same viewing capabilities

When **NOT connected** to TKL

- No Internet Connection required
- Content Revalidation (after 10 days)

Viewing Steps - not logged into TKL

- Navigate to the folder where Downloaded Content “Package” is stored in user machine
- Double-Click on the selected content file
- ARALOC Installed viewer will seek credentials
- On validation, the viewer will launch the file in a new window

Pre-Requisites for Offline Viewer Installation

- **Administrative Rights required to install software applications**
- Reliable Internet Connection
- Adequate disk-space (Approximately 15MB)
- Installed JRE 1.6 environment on the machine

Links to the offline Viewer

Install Offline(installed) Viewer:

Use the URL for PC Viewer download:

http://www.araloc.com/downloads/Araloc_Viewer_Setup.exe

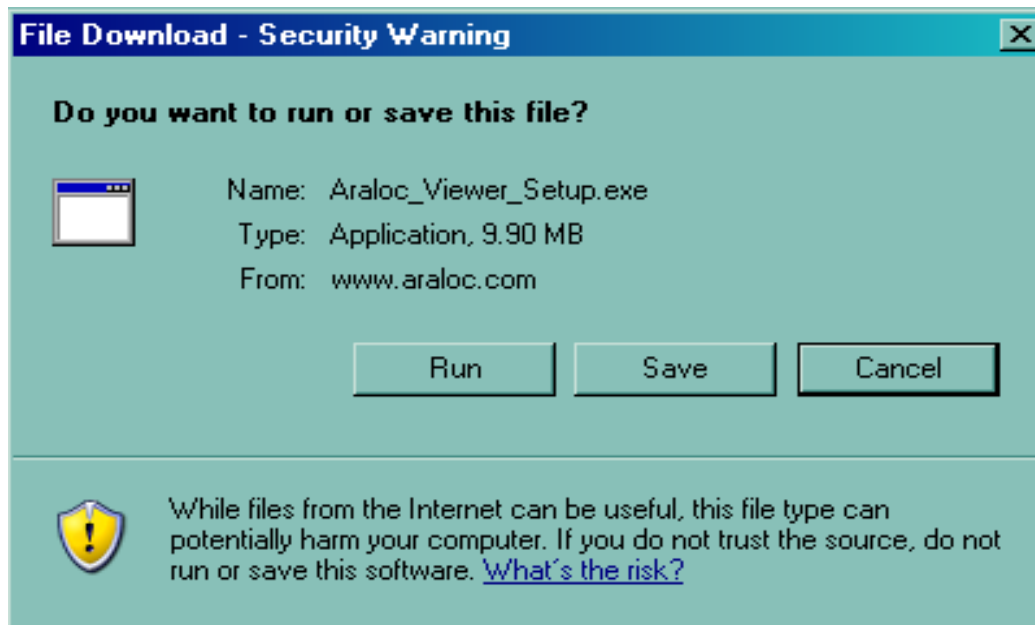
Use the URL for Mac Viewer download:

http://www.araloc.com/downloads/Araloc_Viewer_Setup_Mac.pkg

Installation Steps for ARALOC offline Viewer

Step 1:

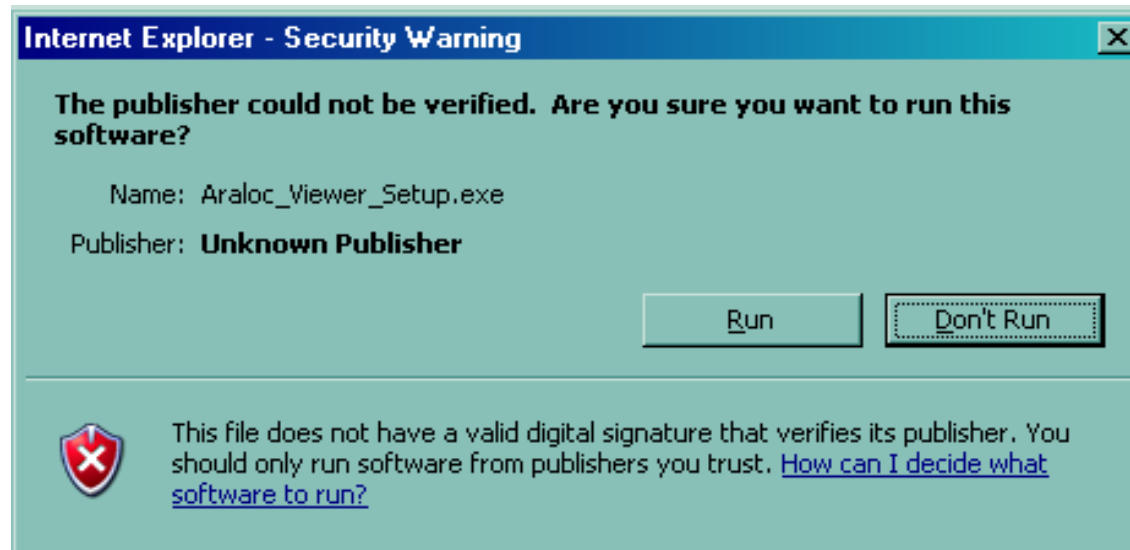
Go to the appropriate link for downloading the ARALOC viewer and download the content and run the installation executable. *Users may need specific rights to install the viewer on their machines and they may need to check with their IT teams.*



Installation Steps for ARALOC offline Viewer

Step 2:

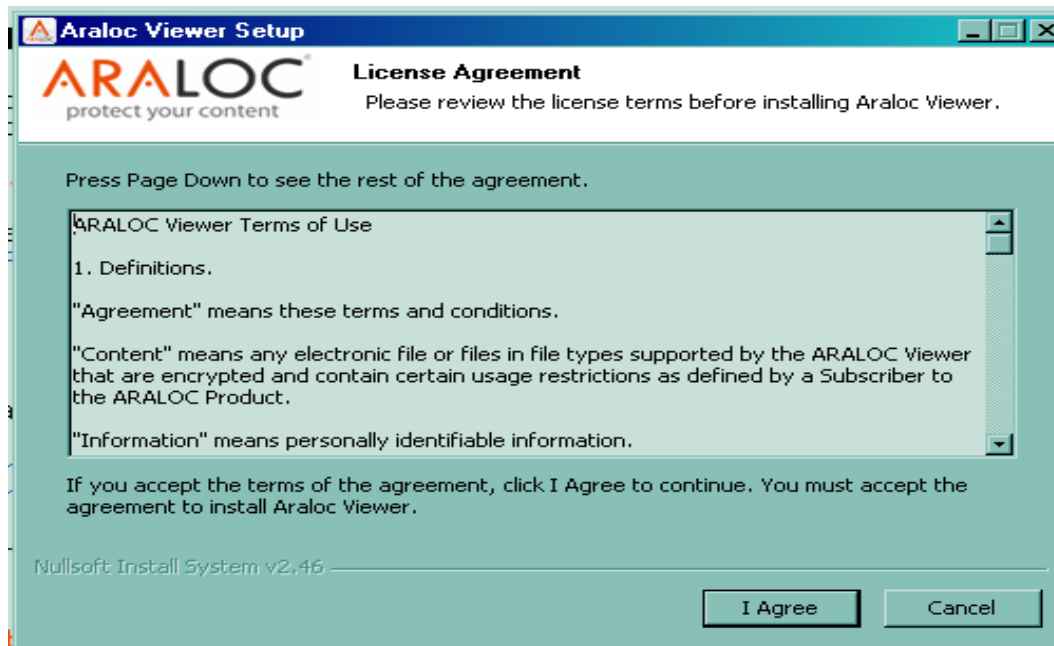
Once the user has the permissions and rights to install the ARALOC viewer on the user machine, the ARALOC viewer executable which was downloaded by the user in Step 1, can be clicked and it will pop-up Run/Don't Run dialog box to the user. Based on the approval status, the user can click Run.



Installation Steps for ARALOC offline Viewer

Step 4:

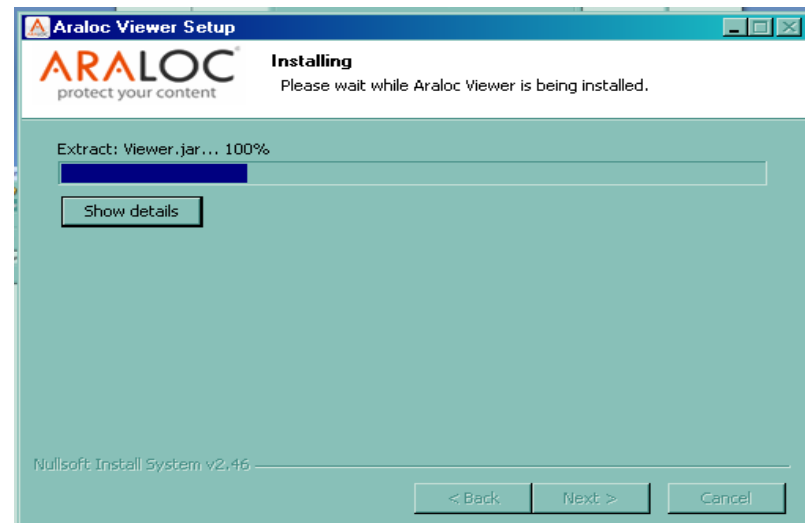
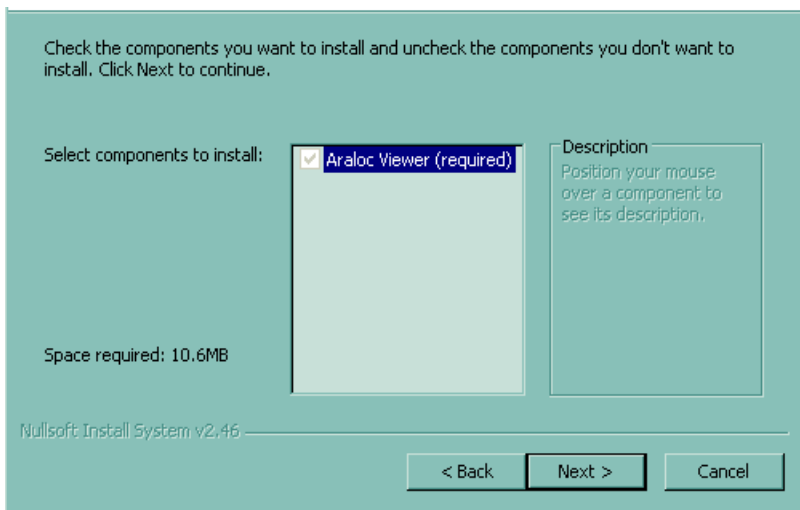
ARALOC will pop-up a “I Agree/Cancel” dialog box to the user to accept the terms and conditions of ARALOC viewer usage. *If the user has the intent and the permission to install the viewer, the user can click on “I Agree” button and proceed further. If not, the user can abort the installation by pressing “Cancel” button.*



Installation Steps for ARALOC offline Viewer

Step 5:

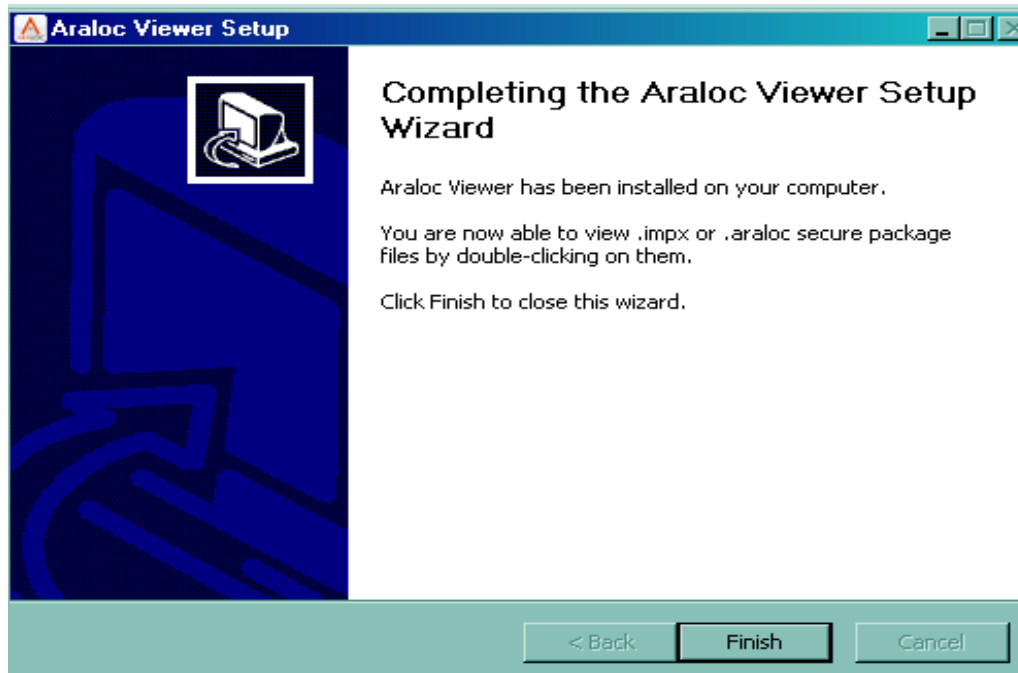
ARALOC installer will ask for choosing the components. By default, there is only one component displayed and the user can select (if not already highlighted) and click Next button to proceed and note the installation proceeds further.



Installation Steps for ARALOC offline Viewer

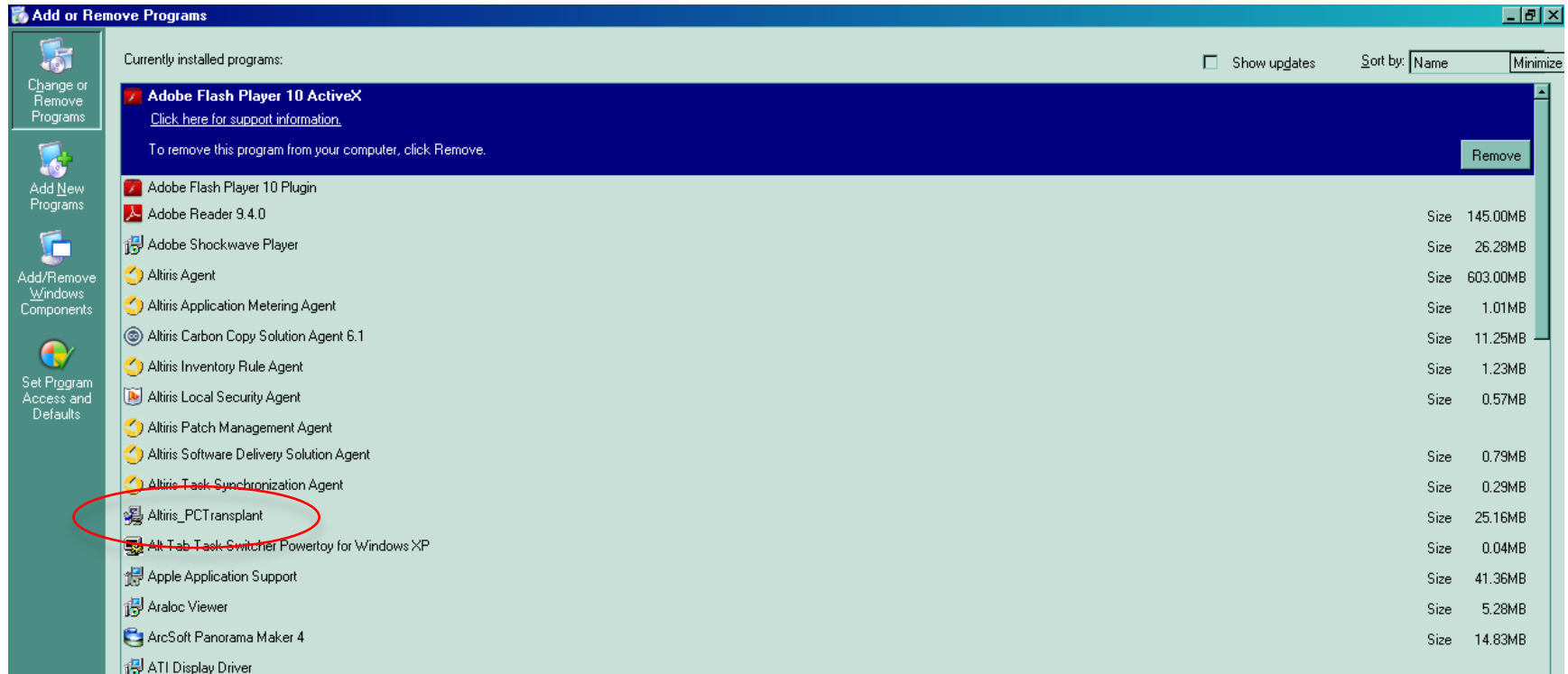
Step 6:

Once the ARALOC installer completes the installation of the viewer, it pops up the “Finish” status. The user clicks “Finish” button to close the installation set up program.



Installation Steps for ARALOC offline Viewer

Step 7 : Verifying with Control Panel: Installed ARALOC Viewer





Thanks

